

BARDEAUX  
D'ASPHALTE

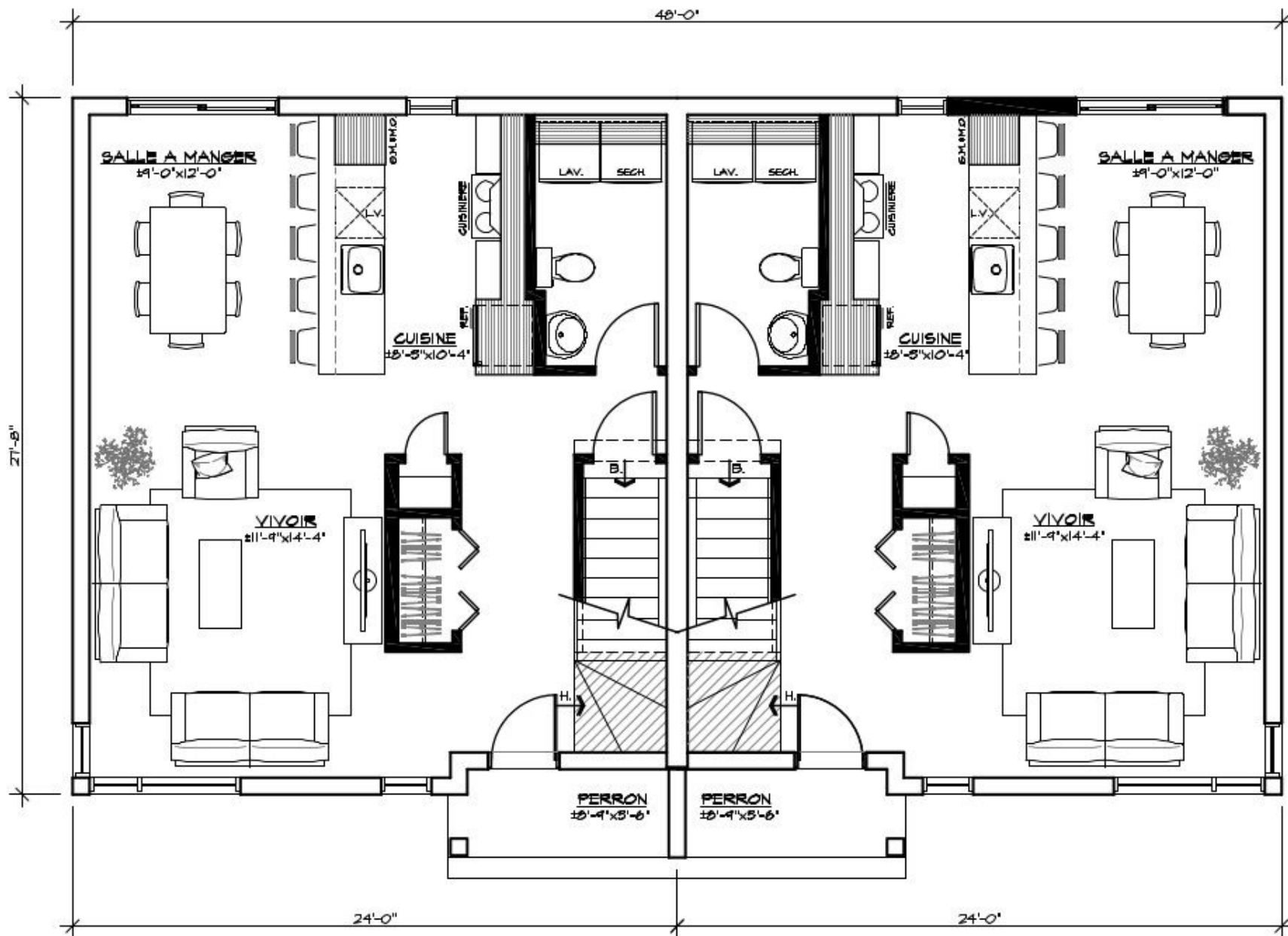
PANNEAUX  
FIBRO-CIMENT

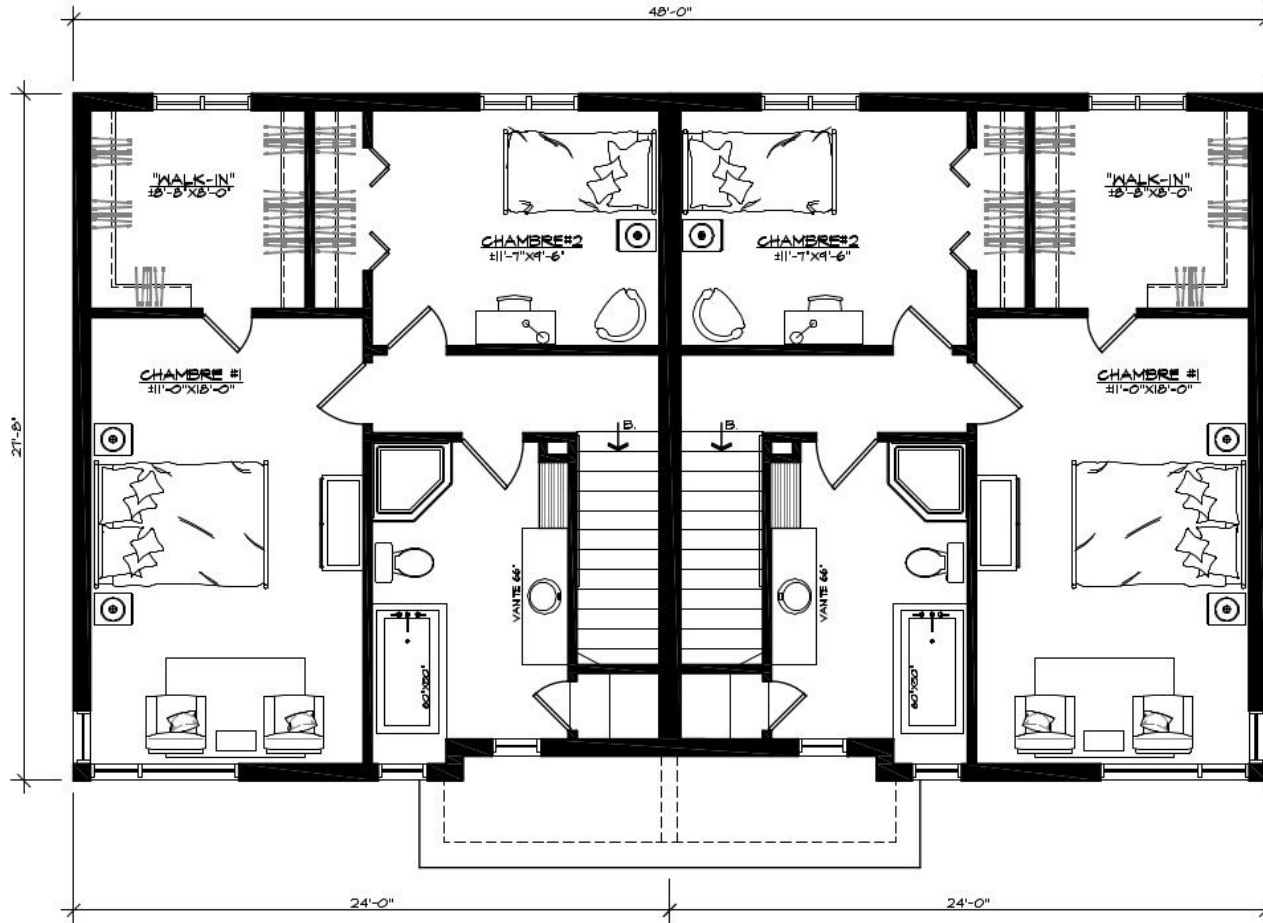
REVETEMENT  
HORIZONTAL

REVETEMENT  
VERTICAL

 Line Rousseau T.P.  
Architecture Le Corbusier INC.

FAÇADE # 20-1039





 **Line Rousseau** T.P.  
Architecture Le Corbusier INC.

ÉTAGE (2 CHAMBRES) # 20-1039

