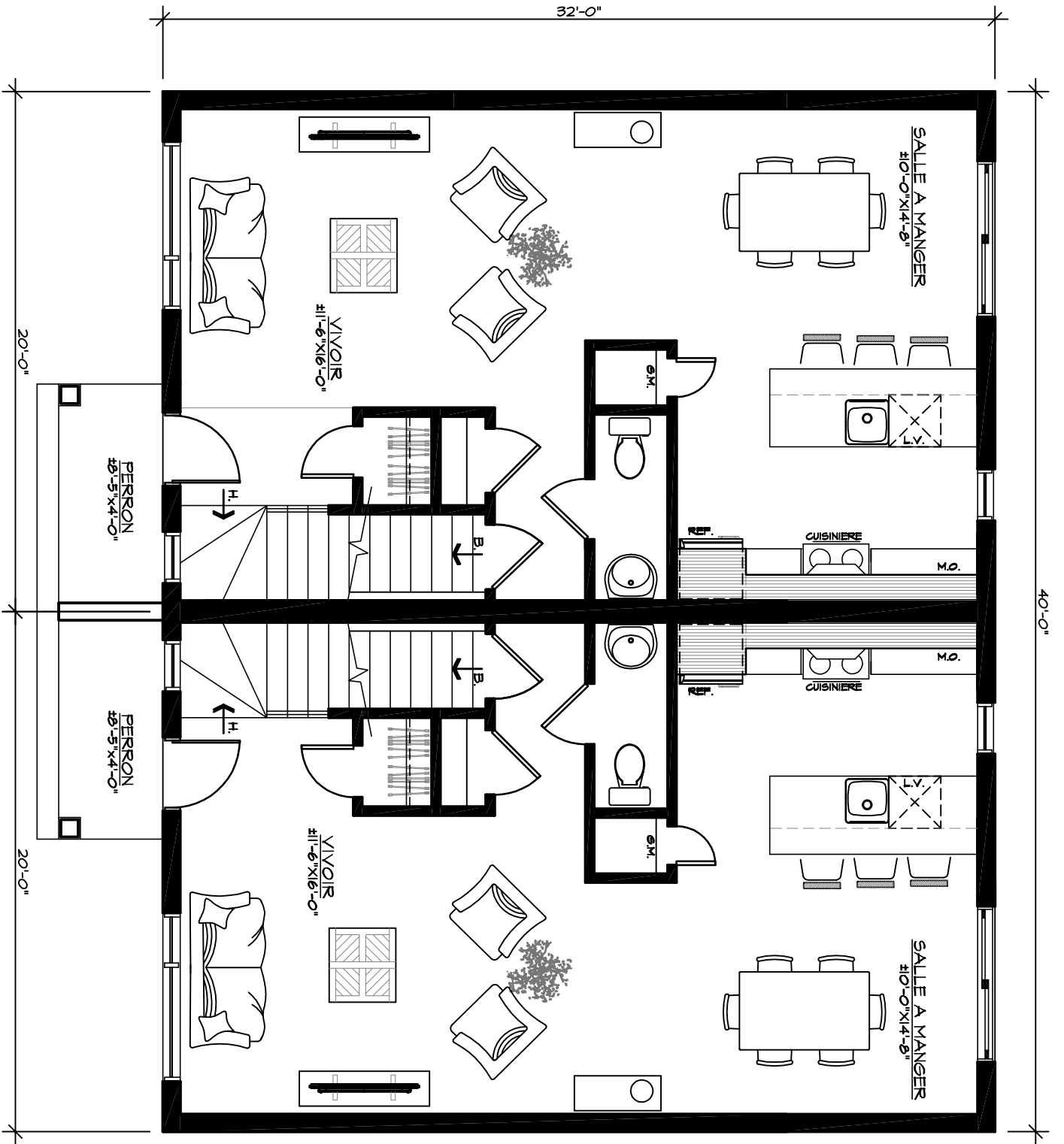
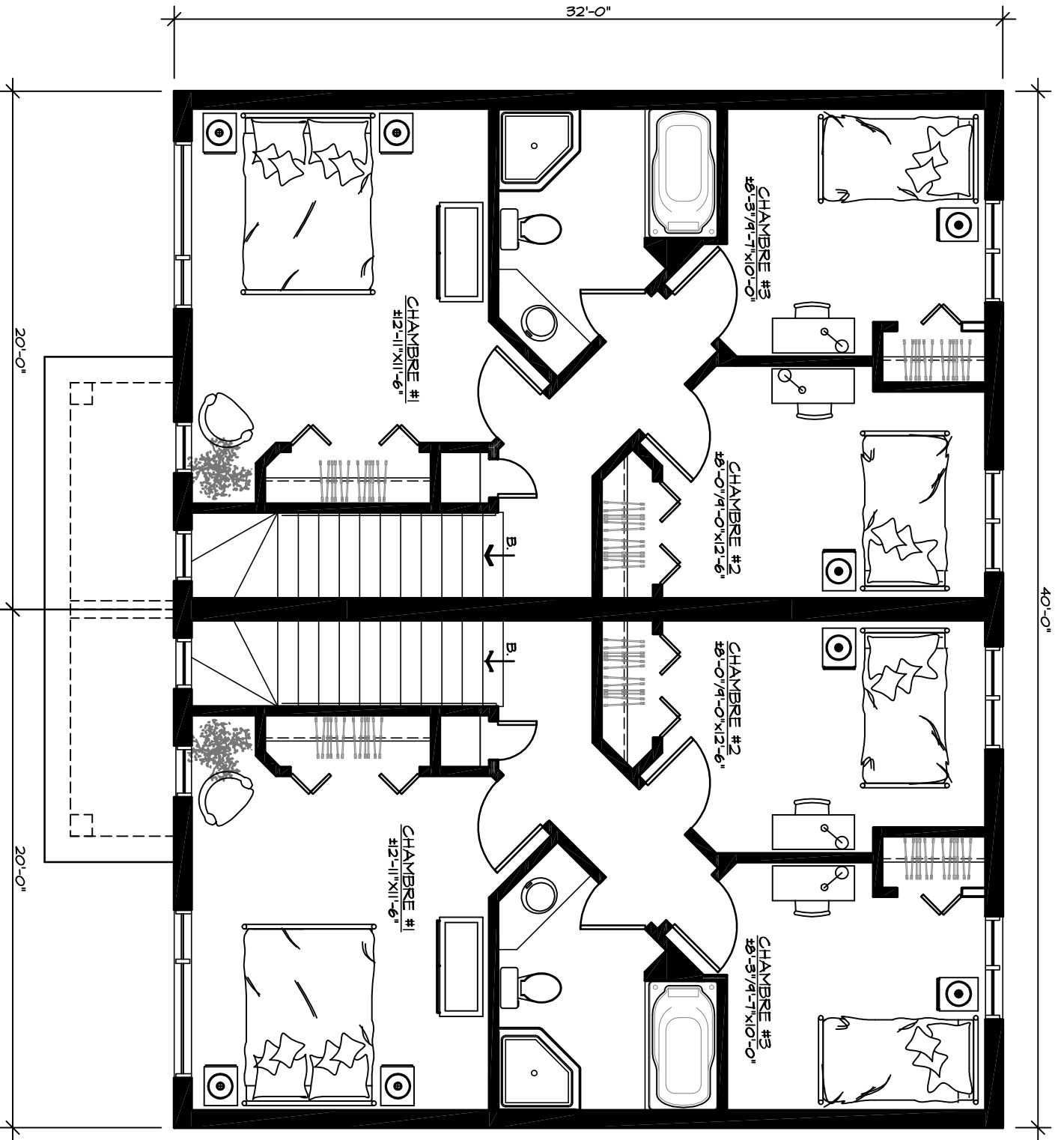


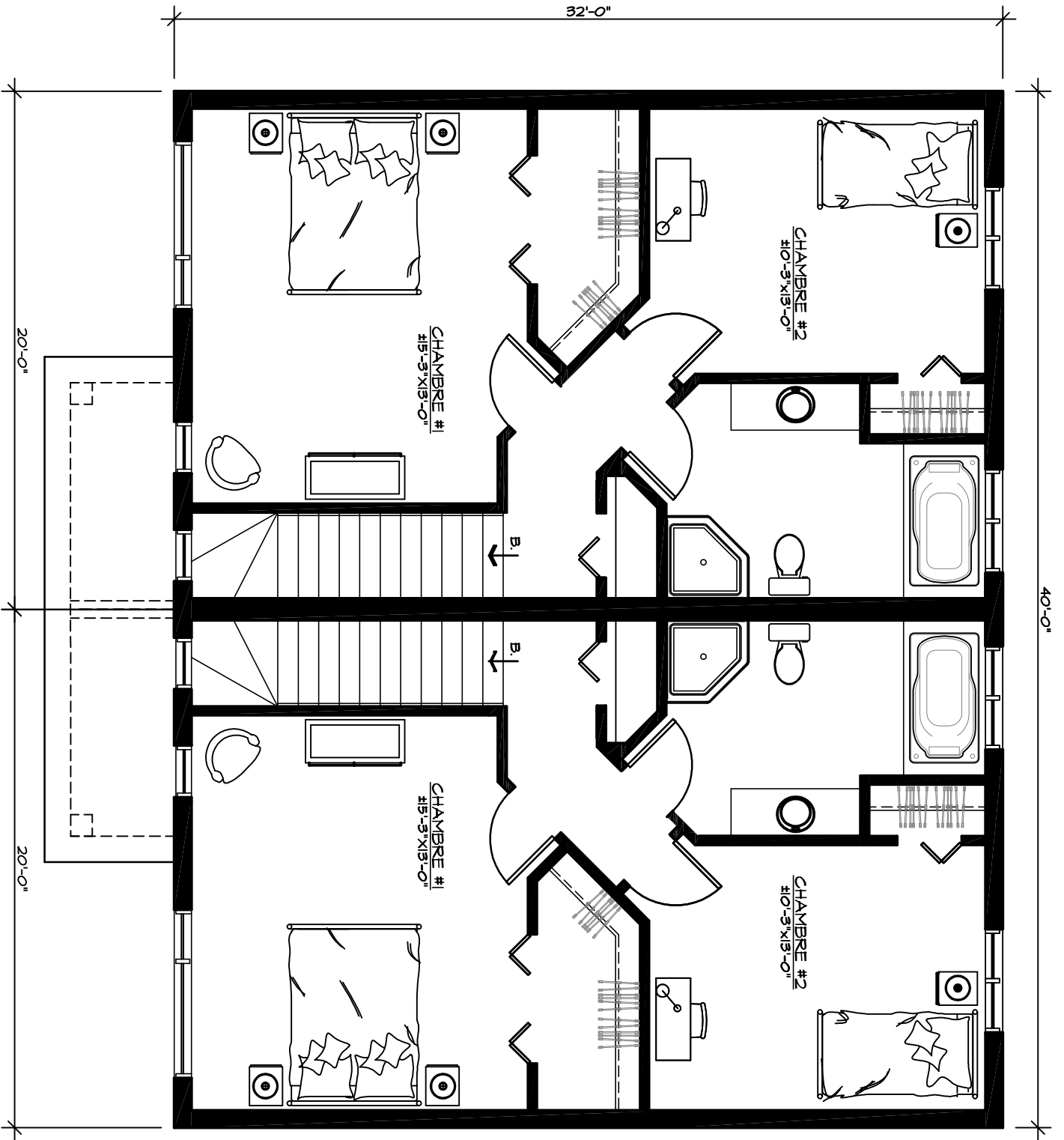
 **Line Rousseau T.P.**
Architecture Le Corbusier INC.

FAÇADE # 18-809



Line Rousseau T.P.
 Architecture Le Corbusier INC.
 REZ-DE-CHAUSSÉE # 18-809



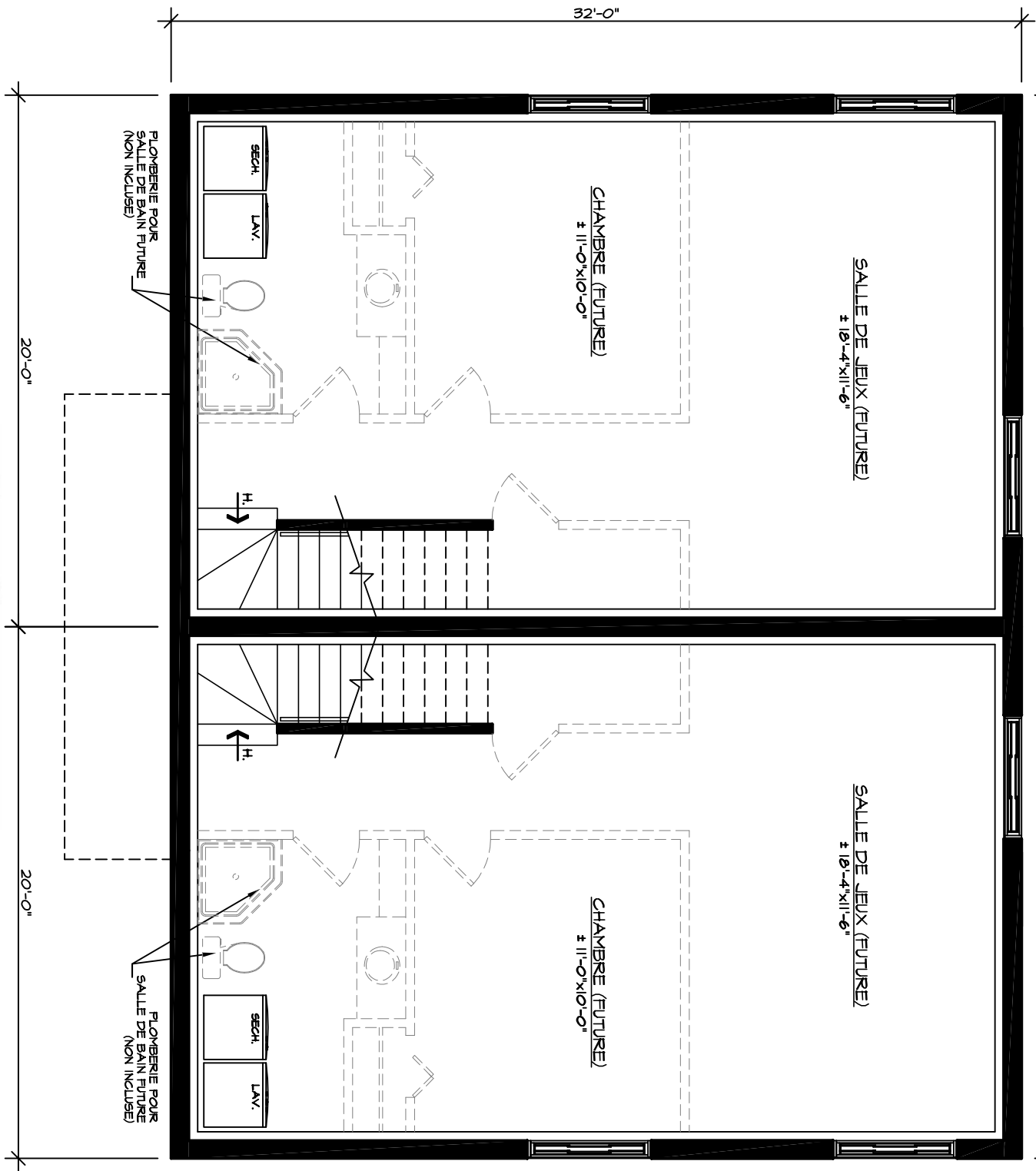


Line Rousseau T.P.
 Architecture Le Corbusier INC.

ÉTAGE (2 CHAMBRES) # 18-809

40'-0"

32'-0"



SALLE DE JEUX (FUTURE)
± 18'-4" x 11'-6"

CHAMBRE (FUTURE)
± 11'-0" x 10'-0"

SALLE DE JEUX (FUTURE)
± 18'-4" x 11'-6"

CHAMBRE (FUTURE)
± 11'-0" x 10'-0"

PLOMBERIE POUR
SALLE DE BAIN FUTURE
(NON INCLUSE)

PLOMBERIE POUR
SALLE DE BAIN FUTURE
(NON INCLUSE)

20'-0"

20'-0"

Line Rousseau T.P.
Architecture Le Corbusier INC.

SOUS-SOL # 18-809