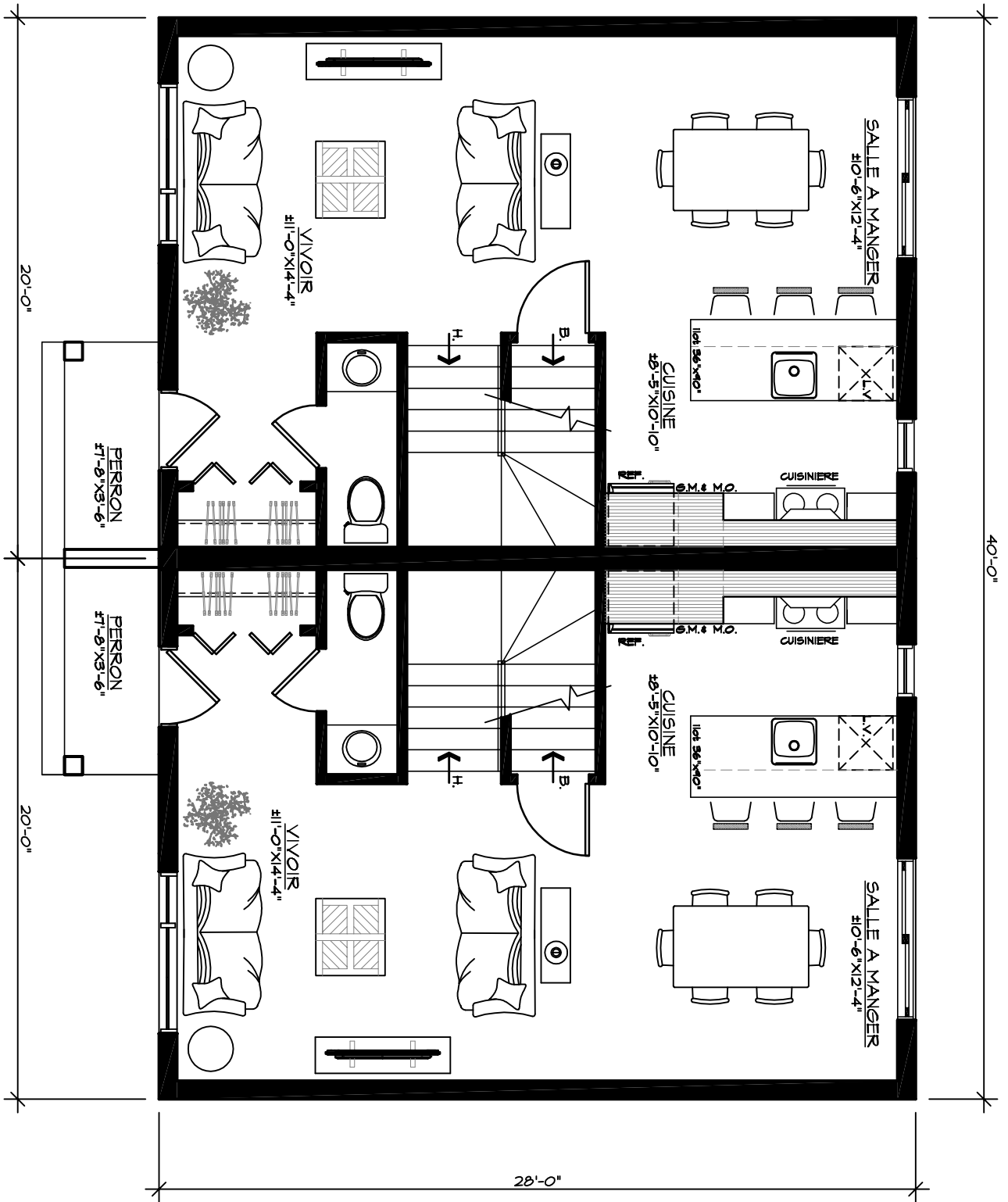


REVETEMENT
HORIZONTAL

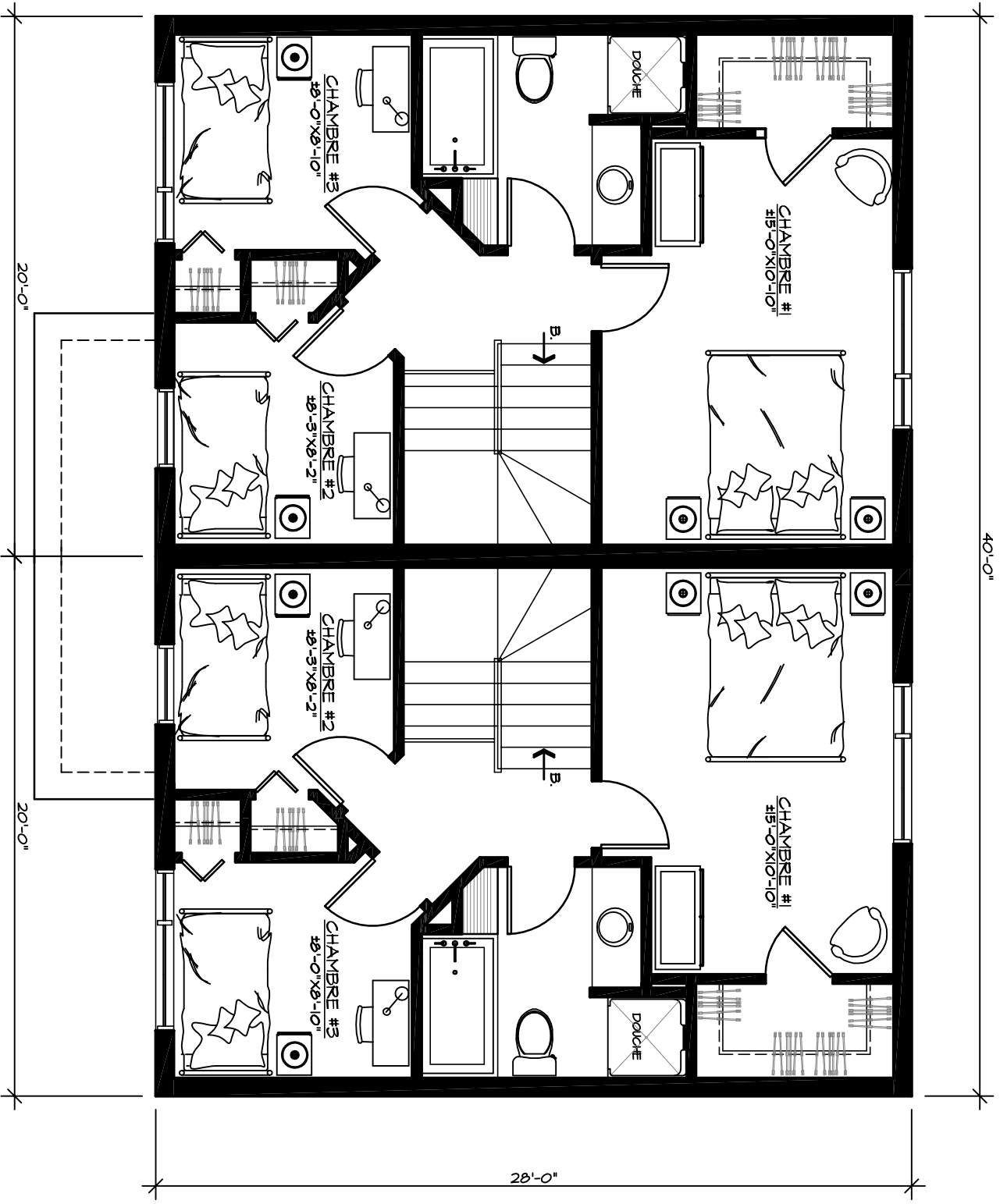
REVETEMENT
VERTICAL

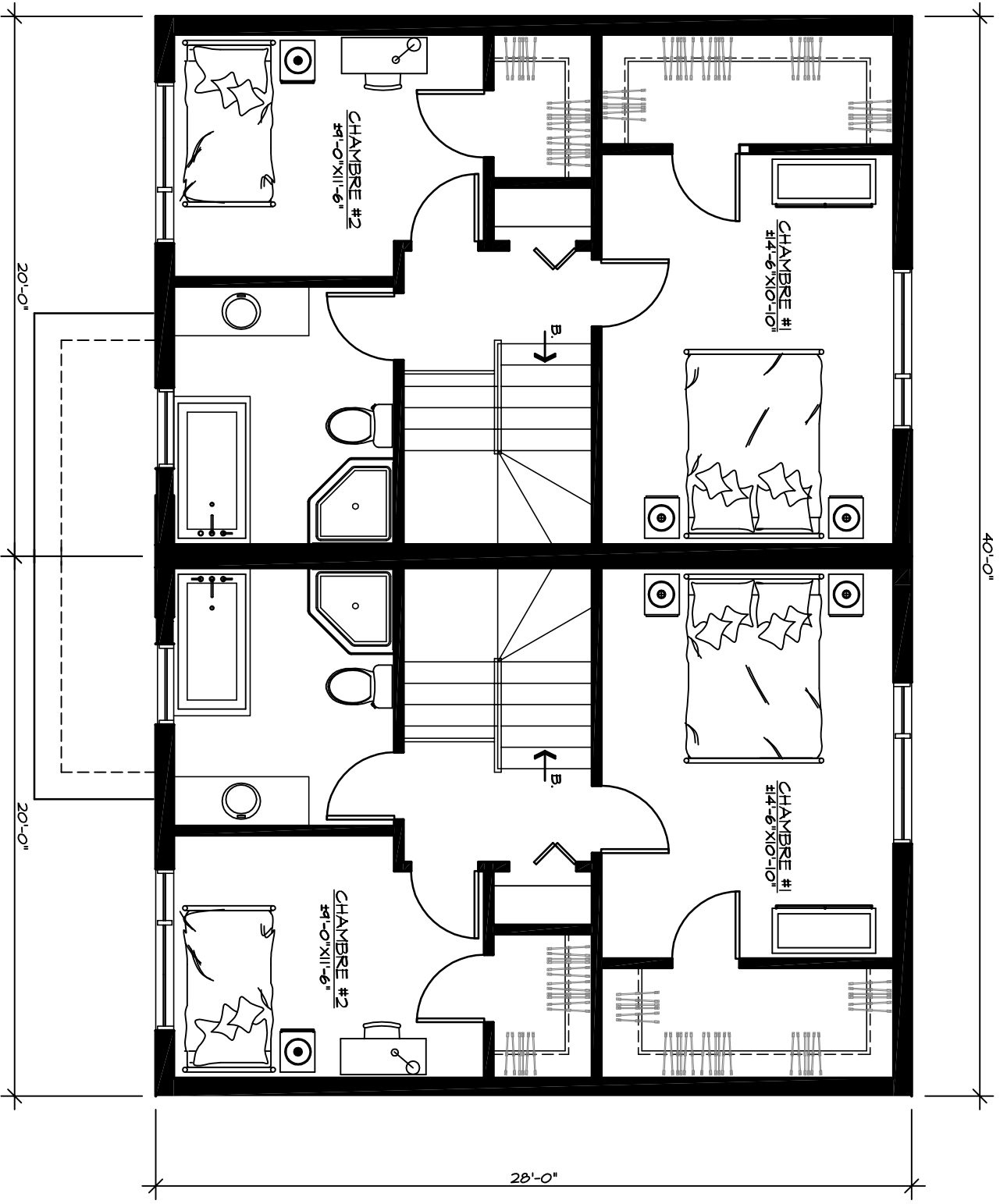
BARDEAUX
D'ASPHALTE



Line Rousseau T.P.
 Architecture Le Corbusier INC.

REZ-DE-CHAUSSÉE # 17-761





Line Rousseau T.P.
 Architecture Le Corbusier INC.

ÉTAGE (2 CHAMBRES) # 17-761

