

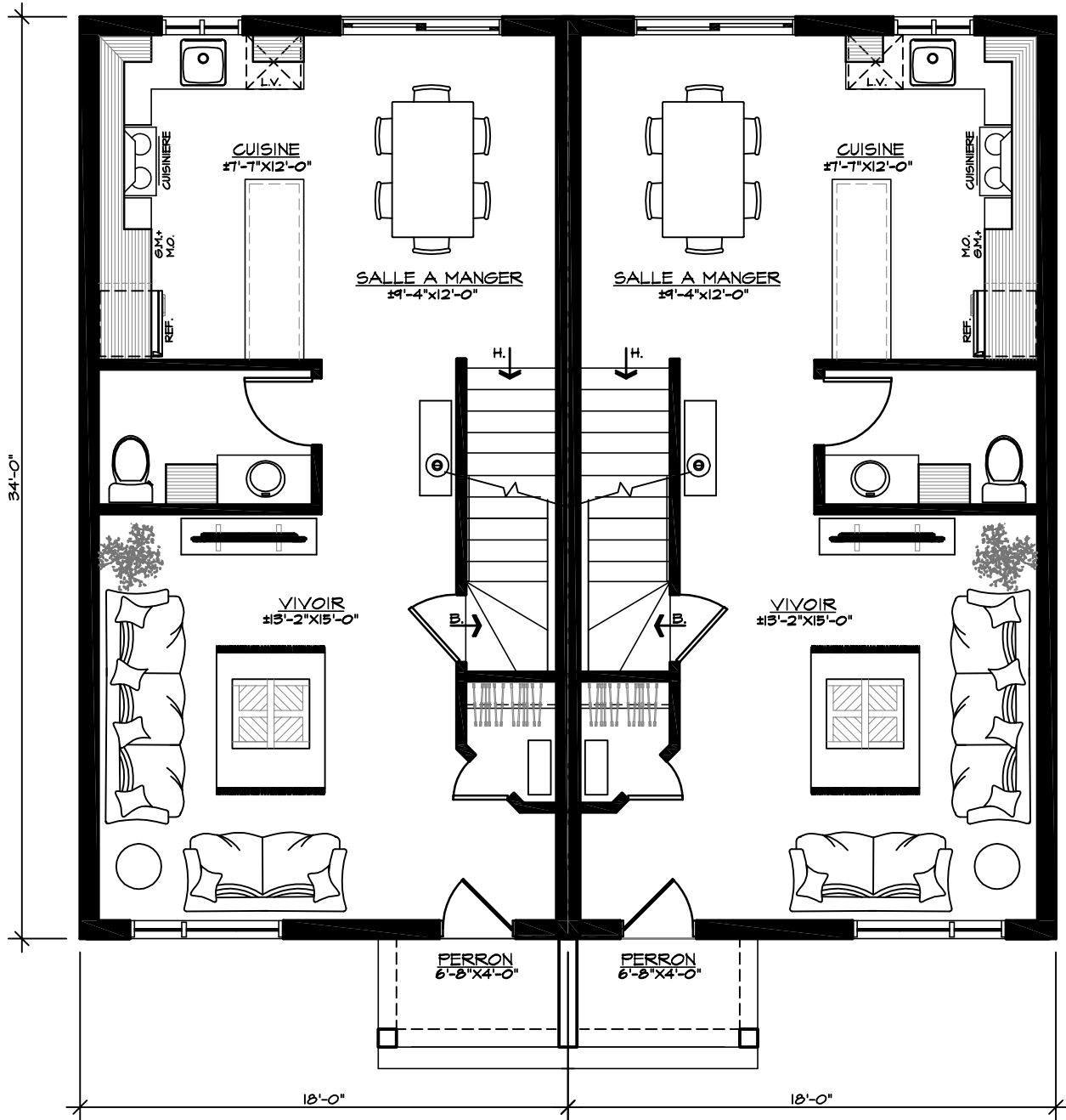
BARDEAUX
D'ASPHALTE

REVETEMENT
HORIZONTAL

Conception : Architecture Le Corbusier

LINE ROUSSEAU

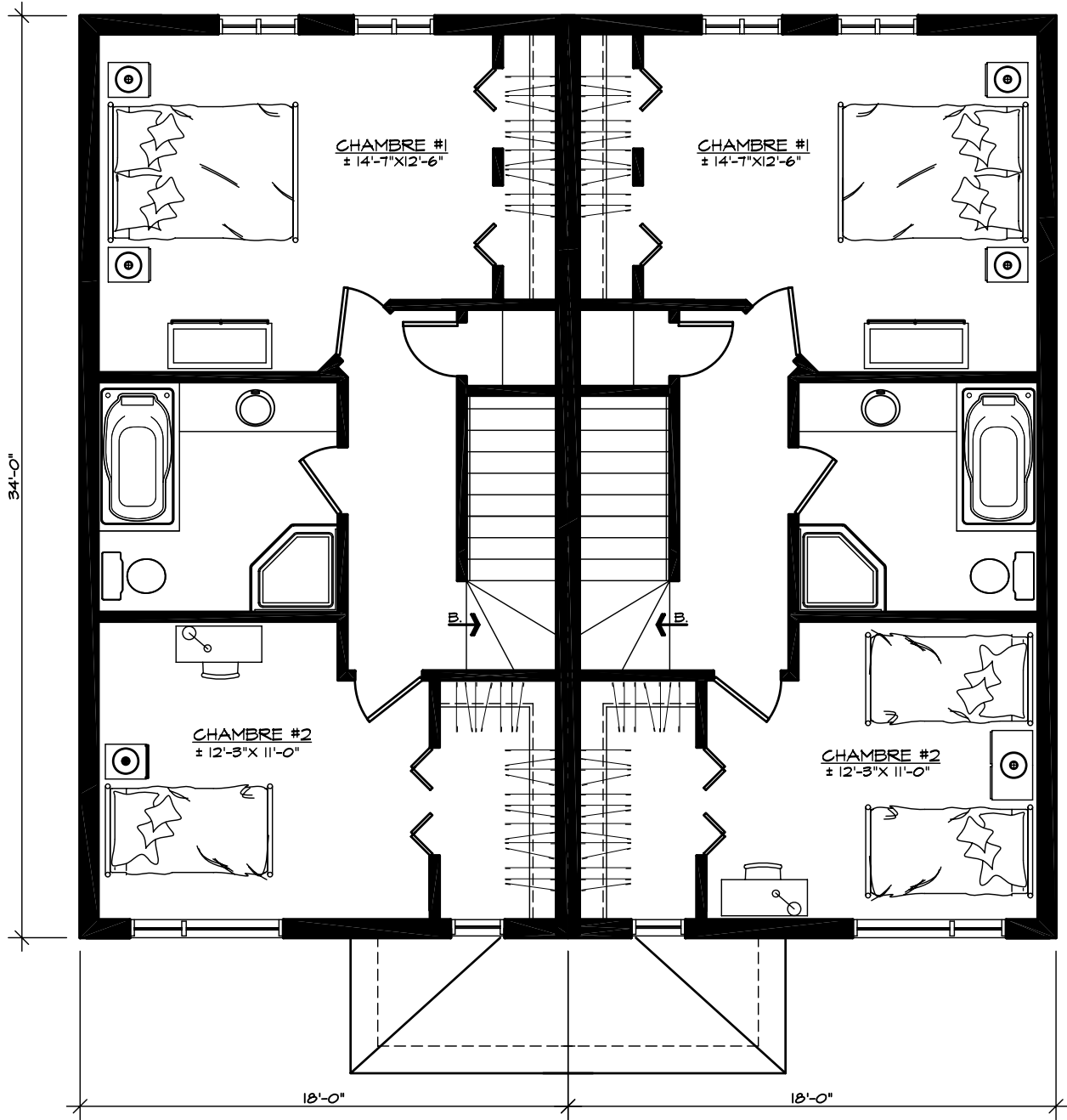
FAÇADE # 13-166



Conception : Architecture Le Corbusier

LINE ROUSSEAU

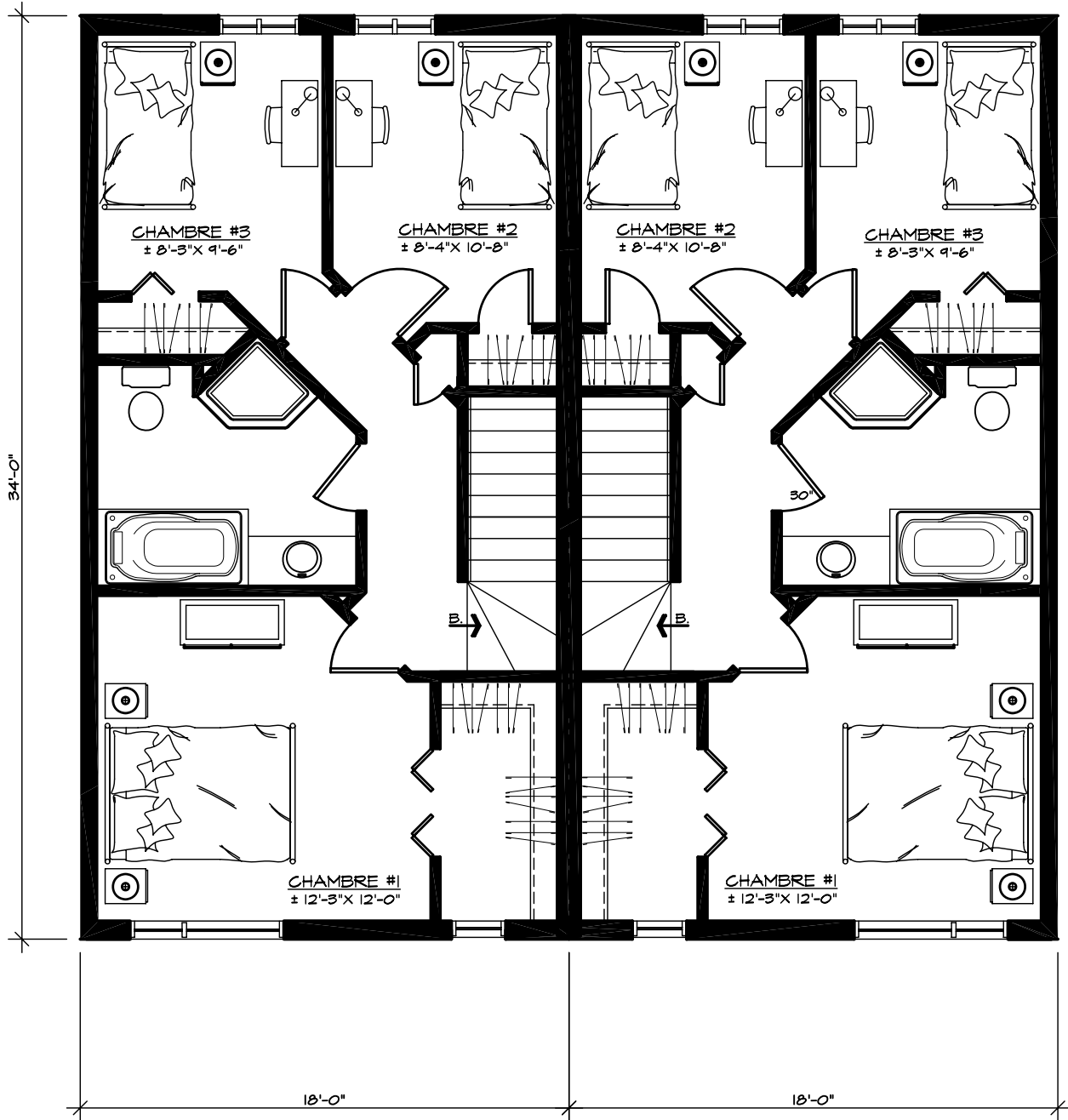
REZ-DE-CHAUSSÉE-2 # 13-166



Conception : Architecture Le Corbusier

LINE ROUSSEAU

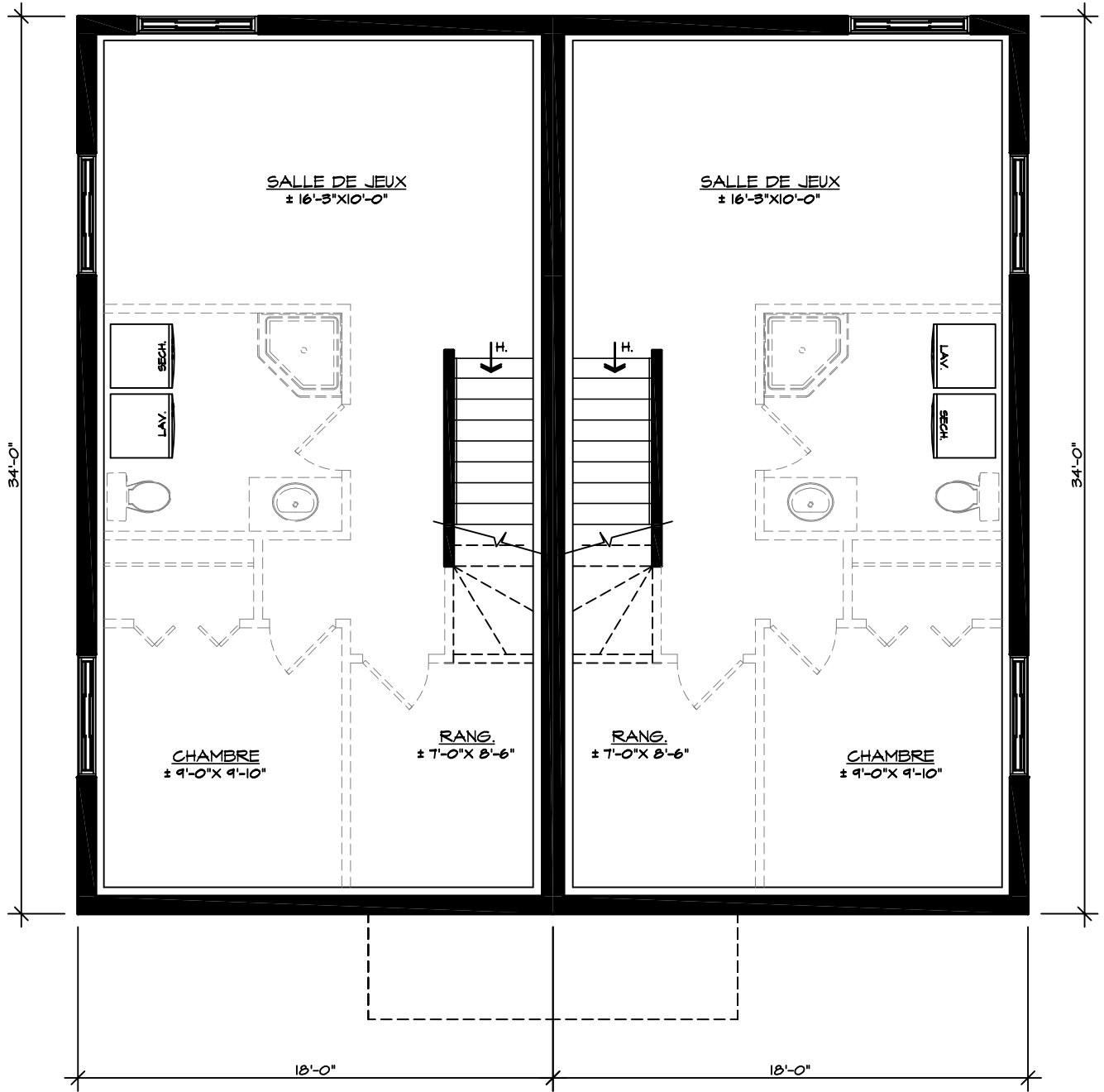
ÉTAGE (2 CHAMBRES) # 13-166



Conception : Architecture Le Corbusier

LINE ROUSSEAU

ÉTAGE (3 CHAMBRES) # 13-166



Conception : Architecture Le Corbusier

LINE ROUSSEAU

SOUS-SOL # 13-166